

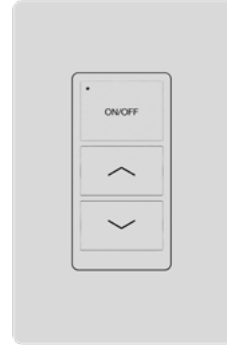
NURO-SW-3B-BT-BLE-WP-V1

3-Button Bluetooth Battery Powered Wall Switch



FEATURES

- 3-Button Bluetooth Wireless Wall Switch
- Battery Powered via Coin Cell Battery (CR2032)
- Bluetooth Transmission Range of up to 100ft
- Turn On / Turn Off functions provided
- Allows for Dimming control Up or Down
- Wall Plate Included
- Easily Controlled via Mobile Phone or Tablet with NUROAir app
- Available on iOS and Google Play Stores



LEARN MORE
BY VISITING
OUR WEBSITE



SCAN OR
CLICK HERE

DIGITAL NAVIGATION

Explore the spec sheet through the links below

[COMPATIBLE FIXTURES](#)

[SUITABLE APPLICATIONS](#)

[RESTORE FACTORY SETTINGS](#)

[LINE DRAWINGS](#)

[BUTTON CONFIGURATIONS](#)

[APP DOWNLOAD](#)



SPECIFICATIONS: NURO-SW-3B-BT-BLE-WP-V1

Input Voltage	1 x CR2032 Coin Cell Battery (DC 3V)
Bluetooth Transmit	100ft Max
Radio Frequency	2.4GHz ± 75MHz

Bluetooth Version	5
Housing Material	UL 94-V0
Location	Indoor use only
Operating Temperature	-18°C to 50°C, -0.4°F to 122°F

IP Rating	IP20
Color	White
Warranty	5 year warranty
Compliance	FCC ID: 2BLDONUROSWT1A

COMPATIBLE FIXTURES

- All NUROAir Compatible Fixtures

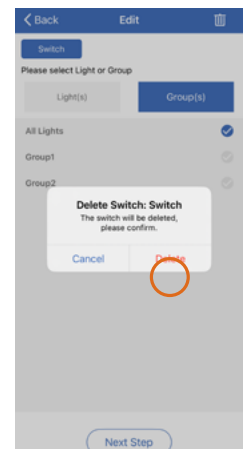
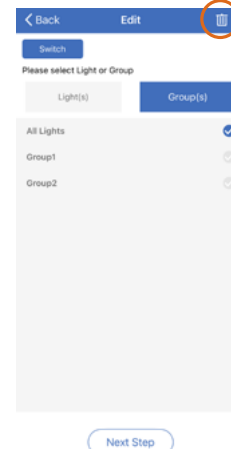
SUITABLE APPLICATIONS

- Schools
- Warehouses
- Office
- Healthcare
- Auditoriums
- Retail

RESTORE FACTORY SETTINGS

In the event that the switch does not appear on the Switches page of the app, it may have been previously assigned to another zone.

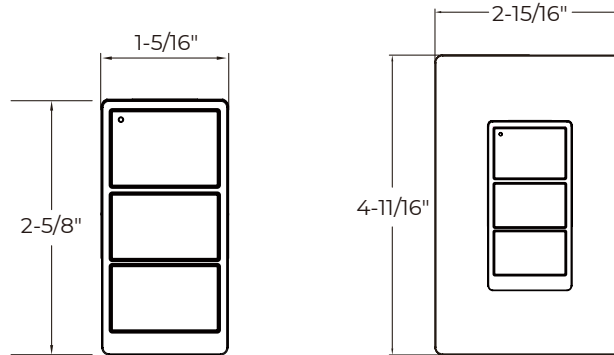
Remove the switch from the app on the Switches page to restore the switch(es) to the factory settings.



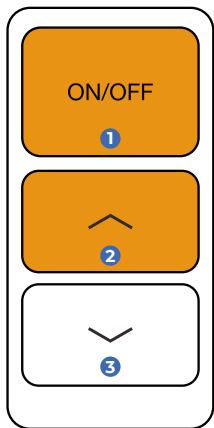
NURO-SW-3B-BT-BLE-WP-V1

3-Button Bluetooth Battery Powered Wall Switch


LINE DRAWINGS

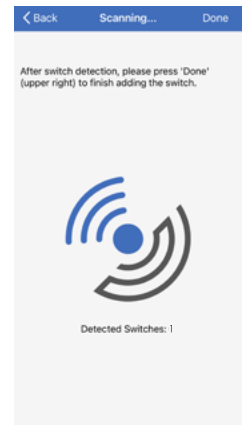


BUTTON CONFIGURATIONS



- 1 ON/OFF
- 2 Dimming Switch - Up
- 3 Dimming Switch - Down

1. To set the switch to pairing mode, press ON/OFF &  together (as shown in orange on the image to the left), and hold for 3 seconds, then release them to activate the pairing mode.
2. In NUROAir app "Switch" Section, press + icon on the top left or Click to Add button on the bottom to add the new switch to the app.
3. Switches will automatically stop pairing after 30 seconds or when a button is pressed.



APP DOWNLOAD



Note: All rights reserved. All sizes and specifications are subject to change at any time without notice.